

BROWSER



Browser is a web-based tool which can simultaneously integrate, query and browse multiple data sets. Images, chemical, biological, analytical, and other data types can be unified and presented in a single tailored view.

SEARCH, BROWSE AND SHARE

Modern organisations need to capture, manage and analyse information coming from disparate sources. BBrowser integrates disparate databases into a central place to allow data sharing from any geographical location with colleagues or collaborators.

Features include:

- Chemically aware query capability using Elemental or any other chemical drawing tool
- Search across multiple databases including chemical, biological or other, i.e. Abase, ChemOffice, Oracle, SQL server, MYSQL, etc.
- Save your search for a later re-run
- Schedule searches and automatic email notifications
- Browse and refine results on an individual basis or in tabular view
- Ultra high-performance for querying and browsing, irrespective of hit-set size
- Calculate chemical properties and aggregate data

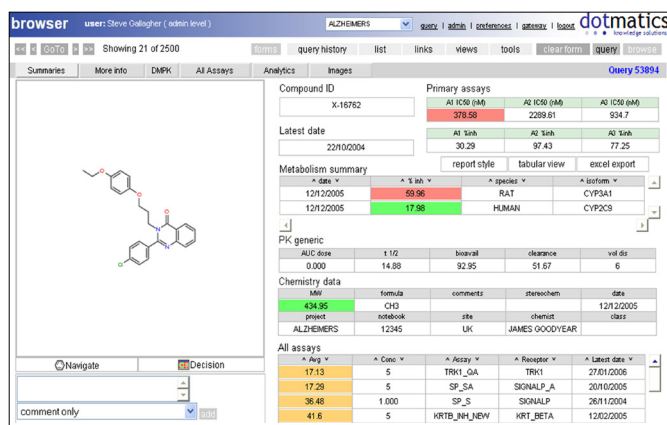


Figure 1: A single view in Browser

FLEXIBLE AND CUSTOMISABLE INTERFACE

Browser is highly configurable. New forms can be created by end-users as well as administrators:

- Create queries and forms across projects or research teams
- Clone and re-design forms with a simple drag and drop interface
- Use Boolean logic to build complex queries
- Dynamically pivot data
- Graphical SQL builder allows users to easily produce complex table joins

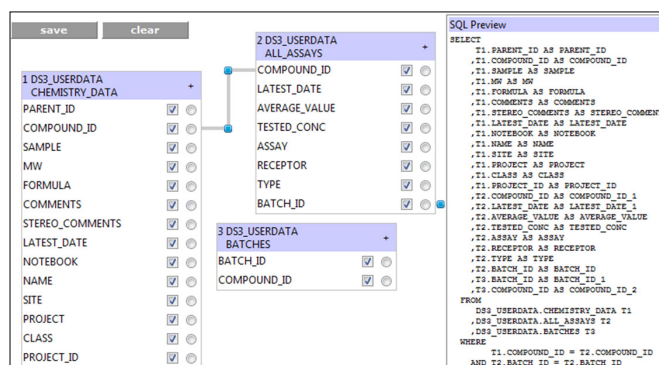


Figure 2: Graphical SQL builder

ENABLING COLLABORATIVE RESEARCH

Browser enables effective organisation, communication and collaboration in research.

- Exchange and share data in real time
- Project-based data compartmentalisation

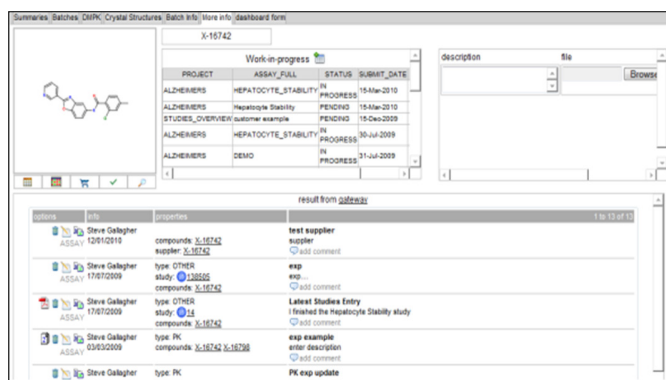


Figure 3: Start a dialogue with your partners

UNIFYING MULTIPLE DATA SOURCES

Browser integrates with multiple data sources allowing you to take advantage of any existing licenses or preferred technology:

- Integrates with any chemical cartridge so you can take advantage of your existing licenses or preferred methodologies including Dotmatics' Pinpoint, JChem, Accord, ISISDirect, SymyxDirect, ChemOffice
- Integrates with document management systems (including Dotmatics' Gateway and Microsoft Sharepoint) and in-house tools to extend its capabilities further
- Join biology databases such as Dotmatics' Studies, Activity Base and Assay Explorer.

assay	result	tested conc	receptor	type	latest date
A1	45	1	A B	%RH	07/09/2011
A1	96.86	4	A B	%RH	02/01/2009
A2	61.46	3	A B	%NH	02/01/2009
A3	33.48	2	A B	%NH	02/01/2009
A4	32.14	1	A B	IC50	07/09/2011

Figure 4: Identify trends and query interactively

Figure 5: Select compounds for further tests

FULLY INTEGRATED WITH ALL DOTMATICS APPLICATIONS

Browser is the query engine behind Dotmatics' applications:

- Query all Dotmatics data sources, including Studies Notebook and create customized reports
- Export/import data directly to Dotmatics' Vortex
- Export directly into all Microsoft Office applications

#	COMPOUND_ID	STRUCTURE	primary data			primary data2			chemistry data	
			A1 IC50 (nM)	A2 IC50 (nM)	A3 IC50 (nM)	A1 %inh	A2 %inh	A3 %inh	MWT	chemist name
1	X-17828		953.43	1559.8	93.217	12.294	25.214	16.618	371.34	MIKE HARTSHORN
2	X-17189		583.01	963.62	1153.8	42.318	28.373	29.196	171.19	LARRY NOTES
3	X-19018		113.02	1213	1176.4	42.39	10.576	48.482	273.27	MARK SMITH

Figure 6: Create SAR tables

SCALABLE AND SECURE

Dotmatics' Browser is entirely web-based, easy to manage and access.

- Scalable three tier architecture
- Uses https protocol for secure communication
- Supports Windows, Mac OSX, Linux and mobile devices
- Run on-premise or the cloud

dotmatics.com

Info: info@dotmatics.com
Sales: sales@dotmatics.com
Support: support@dotmatics.com
Careers: careers@dotmatics.com

Head Office UK

Phone: +44(0)1279 654 123
Fax: +44(0)1279 653 088
The Old Monastery
Windhill
Bishops Stortford
Herts
CM23 2ND
UK

North America West Coast

Phone: +1 855 808 8332
6050 Santo Road
Suite 270
San Diego
CA 92124
USA

North America East Coast

Phone: +1 855 808 8332
800 West Cummings Park
Suite 2950
Woburn
MA 01801
USA

Japan

Phone: +81 3 6895 7390
Shinbashi Tokyo Bldg 3F
4-21-3
Shinbashi
Minato-ku
Tokyo 105-0004
Japan

South Korea

Phone: +82 31 278 7038
Fax: +82 31 278 7039
iOffice Building, 1034-16
Inggye-dong, Paldal-gu
Suwon, Gyeonggi-do
442-834
South Korea